

IMView

Instant Messenger (IM) Analysis Module

IMView Analysis Module addresses the challenge today's organisations face as they contend with increasing amounts of disruptive Instant Messaging (IM) traffic, typified by MSN, AIM/ICQ, Yahoo and IRC. Implemented as an add-on module to DBAM's Exbander Precision devices, IMView provides Network Managers and administrators with comprehensive real time chat logging and conversation detail.

So What's the Problem?

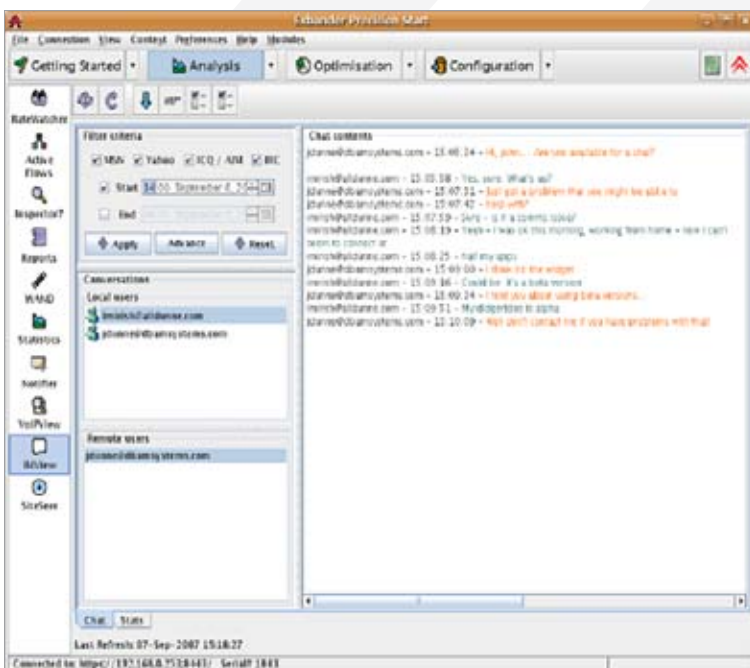
One very real issue with current WAN traffic management is in controlling the amount of Instant Messaging traffic being generated as users bring their laptops from home into work and use non-prescribed applications such as MSN Messenger. Not only does this cost you, as a company, lots in wasted human resource time, but it also uses up expensive bandwidth.

The Sarbanes-Oxley Act of 2002 and the need to meet ever more stringent auditing and regulatory requirements has clearly led to the need to monitor user activity across the Internet. This moves the game beyond the relatively basic tracking capabilities of contemporary security appliances which typically focus on application areas such as URL filtering and extended firewalling.

So, accountability is the keyword and with so many "conversations" now taking place electronically, to simply ignore user Internet activity is akin to gross neglect. At the same time, taking a traditional approach to network monitoring and decrypting hexadecimal code is not the answer.

The Solution?

IMView is a completely radical approach to capturing and replaying Instant Messaging conversations such as MSN, AIM/ICQ, Yahoo and IRC.



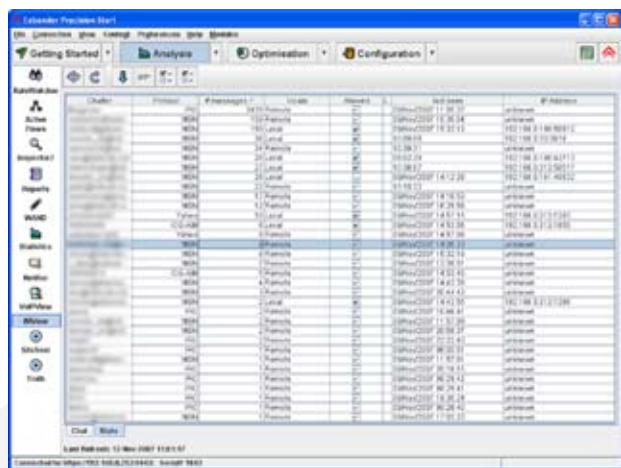
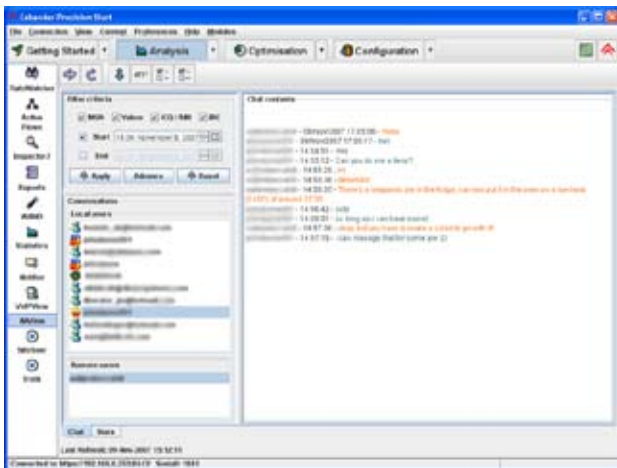
Available as an optional module for the entire DBAM Exbander Precision range of WAN optimisation devices, IMView allows network managers and administrators alike to view instant messaging traffic as it is being generated.

In monitoring Instant Messaging conversations and replaying them faithfully, in real time, it can be used to provide legally supportable evidence as to a company users' legitimate or illegitimate computer Internet activity.

Product Sheet

The IMView Interface

IMView is built around a simple, single-screen user interface. Put simply, the active users appear on the left of the screen and their conversations appear on the right. As such, the interface is designed to be used by any level of computer user – administrators, rather than just technicians. Through this single interface, IMView provides comprehensive real time Internet chat logging, by user, date, time and conversation detail.



Enhanced Security

Additional functionality allows both the blocking and scheduling of IM at IP address level, making IMView one of the most flexible solutions available anywhere.

Business Benefits

IMView is designed to have a positive impact at the ultimate business bottom line – reducing operating costs and increasing trading profits. In providing a means of automated user behaviour control it further optimises staff productivity subtly and unobtrusively.

IMView - Core Features

- » Provides real-time monitoring of employee IM conversations
- » Simple to use but powerful in practice
- » Has the ability to block specific IM users
- » Enables you to view complete conversations and easily cross-reference conversations
- » Allows you to intercept and view conversations
- » Reports on per usage and overall organisational usage
- » Allows exporting of data to centralised databases including Oracle, MySQL, PostGres, thereby minimising local storage requirements

An Independent Opinion

“What is impressive about the IMView module is that it could easily be sold as a complete, standalone product in its own right with full validity but here it appears as a low-cost, add-in module. It is also very efficient in terms of using minimal disk space, so this is not an issue either.”

Steve Broadhead
 Director & Founder, Broadband-Testing Labs

